

MONTHLY MEMBERSHIP PROGRESS REPORT

LOCATION INDIA

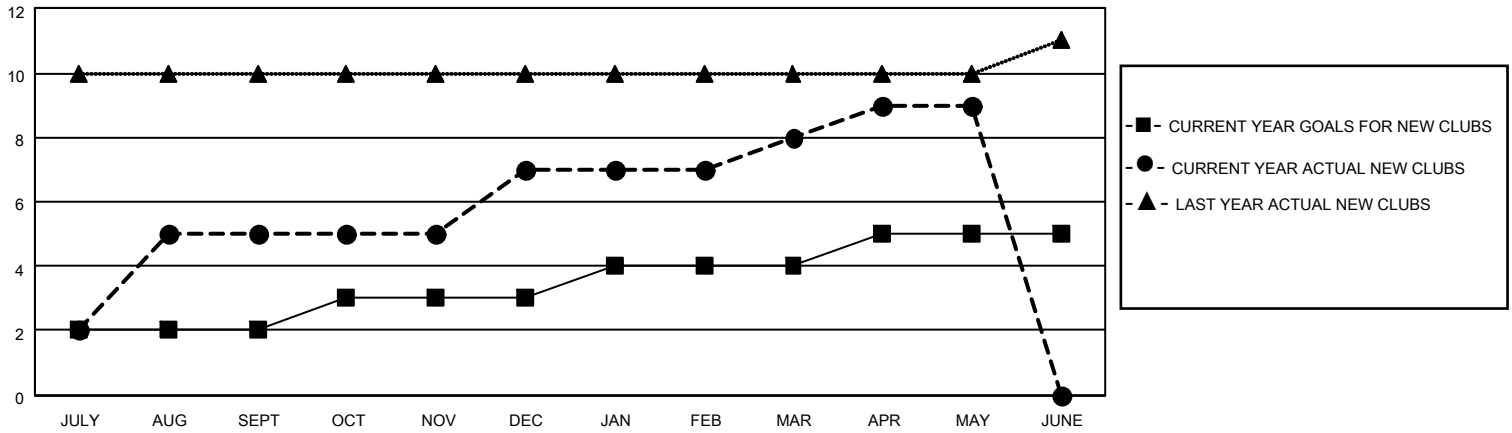
District 321B1

Results as of: 5/31/2023

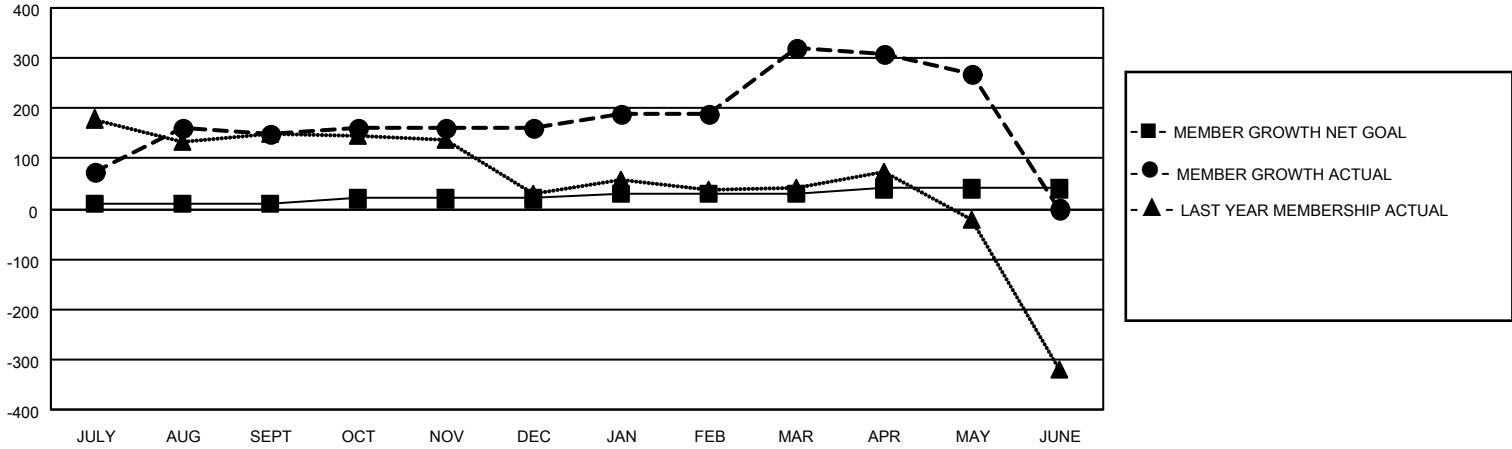
Clubs			
RESULTS FOR 2022-2023			
QUARTER	NEW CLUB GOAL	NEW CLUBS	DROPPED CLUBS
JULY/AUG/SEPT	2	5	0
OCT/NOV/DEC	1	2	1
JAN/FEB/MAR	1	1	0
APR/MAY/JUNE	1	1	0

Members			
RESULTS FOR 2022-2023			
QUARTER	MEMBER GROWTH NET GOAL	MEMBER GROWTH ACTUAL	DROPPED MEMBERS ACTUAL (including transfers)
JULY/AUG/SEPT	10	204	46
OCT/NOV/DEC	10	74	62
JAN/FEB/MAR	10	198	34
APR/MAY/JUNE	10	66	116

GOALS AND ACTUAL NEW CLUBS CUMULATIVE



GOALS AND ACTUAL MEMBERS CUMULATIVE



DROPPED CLUBS: 1	
DROPPED MEMBERS	
DECEASED	4
CLUB CANCELLED	0
OTHER	254
TOTAL	258

57 CLUBS OF 104 ADDED 1 OR MORE NEW MEMBERS

[CLICK HERE FOR CUMULATIVE MEMBERSHIP DATA](#)

<u>GENDER DISTRIBUTION</u>	
MALE	1,658 (55.96%)
FEMALE	1,297 (43.77%)
NON BINARY	0 (0.00%)
PREFER NOT TO ANSWER	8 (0.27%)
TOTAL FAMILY UNIT MEMBERS	1,997
FAMILY MEMBERS PAYING HALF DUES	1,145